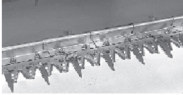




MIDWEST MACHINERY CO

Harvest Special through August 31, 2017 600F SERIES FLEX HEADS

REG COARSE SECTION SICKLE



	Reg.	SALE
35'	\$ 1,401.71	\$ 1,261.55
30'	\$ 1,255.73	\$ 1130.17
25'	\$ 1,032.16	\$ 928.95
20'	\$ 862.63	\$ 776.37

LONG/SHORT SECTION SICKLE

	Reg.	SALE
35'	\$ 1,469.06	\$ 1,322.17
30'	\$ 1,311.12	\$ 1,180.03
25'	\$ 1,072.84	\$ 965.57
20'	\$ 903.27	\$ 812.95



600 FLEX DRAPER REG COARSE SECTION SICKLE

	Right Hand Sickle		Left Hand Sickle	
	Reg.	SALE	Reg.	SALE
45'	\$ 1,063.36	\$ 957.03	\$ 1,148.43	\$ 1,033.60
40'	\$ 1,007.79	\$ 907.02	\$ 1,092.86	\$ 983.59
35'	\$ 813.46	\$ 732.12	\$ 898.53	\$ 808.69

SICKLE SECTION

		Reg.	SALE
H163131	Reg Coarse	\$ 3.21	\$ 2.72
H215064	L/S Coarse	\$ 3.30	\$ 2.97



GUARDS

		Reg.	SALE
H213507	Short-Long-Short	\$ 21.93	\$ 16.44
H213398	Long-Short-Long	\$ 21.93	\$ 16.44

200, 900, 900F SERIES FLEX HEADS SICKLES

FINE

	Reg.	SALE
30'	\$ 696.50	\$ 626.85
24-25'	\$ 607.78	\$ 547.00
22'	\$ 537.78	\$ 484.00
18-20'	\$ 497.61	\$ 447.85
15-16'	\$ 449.06	\$ 404.15

COARSE

	Reg.	SALE
30'	\$ 724.00	\$ 651.60
24-25'	\$ 635.28	\$ 571.75
22'	\$ 553.93	\$ 498.54
18-20'	\$ 513.76	\$ 462.39
15-16'	\$ 465.21	\$ 418.69



SICKLE SECTIONS

		Reg.	SALE
H207929	Fine	\$ 1.97	\$ 1.77
H207930	Coarse	\$ 1.87	\$ 1.68



GUARDS

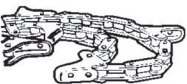
		Reg.	SALE
H145791	Green	\$ 12.00	\$ 10.80
H171031	Black	\$ 14.40	\$ 12.96
H153719	Silver	\$ 14.04	\$ 12.64

REEL TEETH

		Reg.	SALE
A-91C246	200 Series Plastic Replacement	\$ 3.67	
H127035	900 Series Tear Drop	\$ 2.28	\$ 2.05
AH153175	900 Series Round Pipe	\$ 3.48	\$ 3.13
AH166493	900F/600F Series Round Pipe	\$ 3.35	\$ 3.02



40 & 90 SERIES CORN HEADS



		Reg.	SALE
AN102009	Gathering Chain	\$ 47.75	\$ 42.97
AH101219	Greasable Lower Sprocket	\$ 18.04	\$ 16.24
AN102448	Non-Greasable Lower Sprocket	\$ 15.90	\$ 14.31
H85252	Upper Sprocket	\$ 28.57	\$ 25.71

600 SERIES CHOPPING CORN HEADS

		Reg.	SALE
HXE36504	Chopping Knife	\$ 20.79	\$ 18.71
H233284	Bushing (- 745100) S/N	\$ 15.82	\$ 14.24
HXE24237	Bushing (745101 -) S/N	\$ 14.99	\$ 13.49

*365 day parts
and labor
warranty on
parts installed
by Midwest
Machinery*

27, 100, 200 SERIES STALK CHOPPERS



	Reg.	SALE	
P60322 Heat Treated Knife	\$ 7.36	\$ 6.62	50 or more
E48307 D-Ring (27, 100 Series)	\$ 4.04	\$ 3.64	20 or more
E48305 Clip (27, 100 Series)	\$ 6.25	\$ 5.63	10 or more
P59884 Clip (200 Series)	\$ 9.81	\$ 8.83	10 or more
P58586 Hard Surface Knife	\$ 15.18	\$ 13.66	50 or more
P71716 Hard Surface Knife (520 Series)	\$ 15.51	\$ 13.96	50 or more

SWEEPS/SHOVELS/POINTS



	Reg.	SALE
N130190 2"x16"x5/8" Spike	\$ 19.03	\$ 16.18
N237910 2"x16"x7/8" Spike	\$ 26.43	\$ 22.46
N181912-3 3"x24" Concave Twist	\$ 32.06	\$ 27.25
N181906-7 4"x24" Concave Twist	\$ 40.15	\$ 34.13
N182107-8 3"x22" Flat Twist	\$ 22.49	\$ 19.50
N182109-10 4" x 24" Flat Twist	\$ 29.61	\$ 25.17
N400765 7" Ripper pt. 1 1/4 Shank (JD)	\$ 130.64	\$ 111.04
N400766 10" Ripper pt. 1 1/4 Shank	\$ 164.70	\$ 140.00
N400740 10" Ripper point 1 1/2" Shank (DMI)	\$ 155.40	\$ 132.09
N401044 7" Ripper pt. 1 1/4 Shank (DMI)	\$ 108.66	\$ 92.36
N262718 4" Cover Board	\$ 32.04	\$ 27.23
N262719 6" Cover Board	\$ 41.58	\$ 35.34
N262720 8" Cover Board	\$ 42.91	\$ 36.47

PLOW PARTS



METRIC BOTTOMS

	Reg.	SALE
A42808 18" Full Cut Share	\$ 31.58	\$ 26.84
A51080 Shin	\$ 28.10	\$ 23.89
A45226 Landside Regular	\$ 22.25	\$ 18.91
N250286 Landside Long	\$ 25.24	\$ 21.45
A32209 18" Moldboard	\$ 233.91	\$ 198.82



NU BOTTOMS

	Reg.	SALE
A51504 18" Full Cut Share	\$ 29.88	\$ 25.40
A51505 18" Narrow Cut Share	\$ 29.88	\$ 25.40
A51500 16" Full Cut Share	\$ 26.28	\$ 22.34
A51501 16" Narrow Cut Share	\$ 27.16	\$ 23.09
A51081 Shin	\$ 28.21	\$ 23.98
A16493 Landside Inside	\$ 21.10	\$ 17.94
A16495 Landside Outside	\$ 17.04	\$ 14.48

MOWER CONDITIONERS

PULL TYPE CHOPPERS

	Reg.	SALE
FH323281/E80206 Knife	\$ 2.00	\$ 1.84
FH323282/E80208 Knife	\$ 2.00	\$ 1.84
AE71036 Shear Hub	\$ 87.58	\$ 80.57

	Reg.	SALE
AE44465 Stationary Knife	\$ 280.46	\$ 258.01
AE44466 Stationary Knife	\$ 286.13	\$ 263.24
FH310957 Rotary Knife	\$ 16.22	\$ 14.91
FH310956 Rotary Knife	\$ 16.39	\$ 15.07
E76994 Discharge Spout Channel	\$ 105.00	\$ 96.60
E33368 Stationary Knife (Head)	\$ 18.18	\$ 16.73
E61278 Rotary Knife (Head)	\$ 31.91	\$ 29.36
AE73755 2 Row Gatherer Chain	\$ 176.73	\$ 162.59
AE73758 3 Row Gatherer Chain (Outer)	\$ 274.24	\$ 252.30
AE73757 3 Row Gatherer Chain (Inner)	\$ 230.03	\$ 211.63
AE73756 3 Row Gatherer Chain (Center)	\$ 215.64	\$ 198.39

BALER TEETH

	Reg.	SALE
FH304576 Square (6,7,8,9 Series)	\$ 6.71	\$ 6.16
E90880 RH (6,7,8,9 Series)	\$ 10.24	\$ 9.41
E90881 LH (6,7,8,9 Series)	\$ 10.24	\$ 9.41
E79475 (3,4,5 Series)	\$ 2.90	\$ 2.66
E41833 Square Baler	\$ 2.48	\$ 2.27



10% OFF 30 & 55 Gallon Drums of Oil/Anti-Freeze through August 31, 2017



10% OFF All John Deere Filters through August 31, 2017

10% OFF John Deere Grease 30 Pack

